

Dome Legs Explained

Description of material:

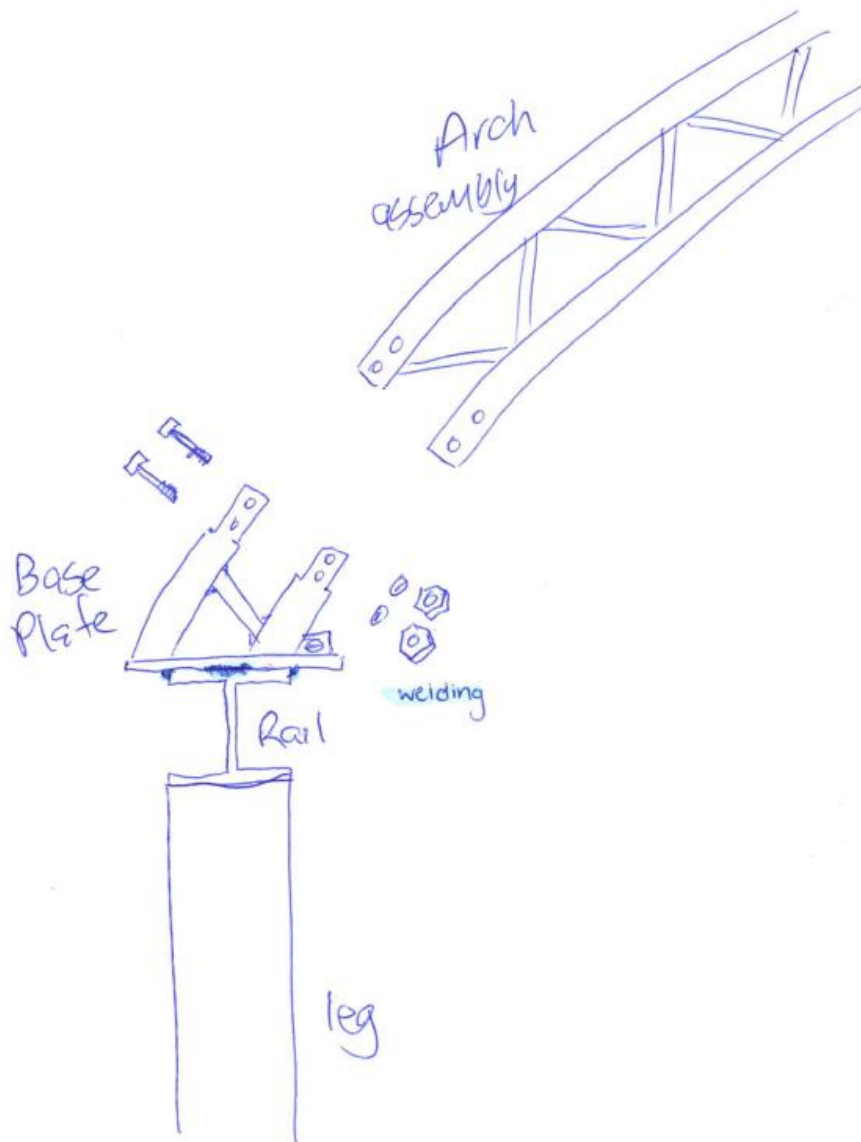
Galvanised surface (zinc coating 600g/sqm), welded by H beam, 200x204x12x12mm, 56kg/m, Q345B, with M18 bolts, nuts and washers.

Securing legs to the ground:

Cage bolts are concreted into the ground on footings. Legs are lowered onto these and tightened up. And then the rails are lowered onto of legs and bolted up.

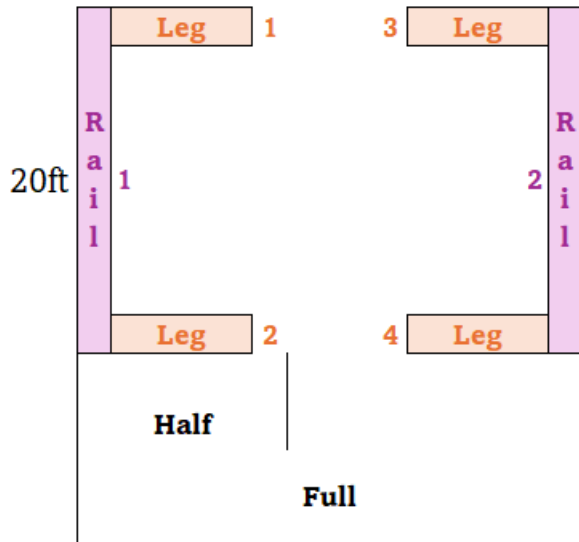
How is it attached to the dome:

The base plate is welded onto the rails at the required spacings and for each side of the dome, ready for the assembled arches of the domes to be lowered and connected to the base plate with bolts.



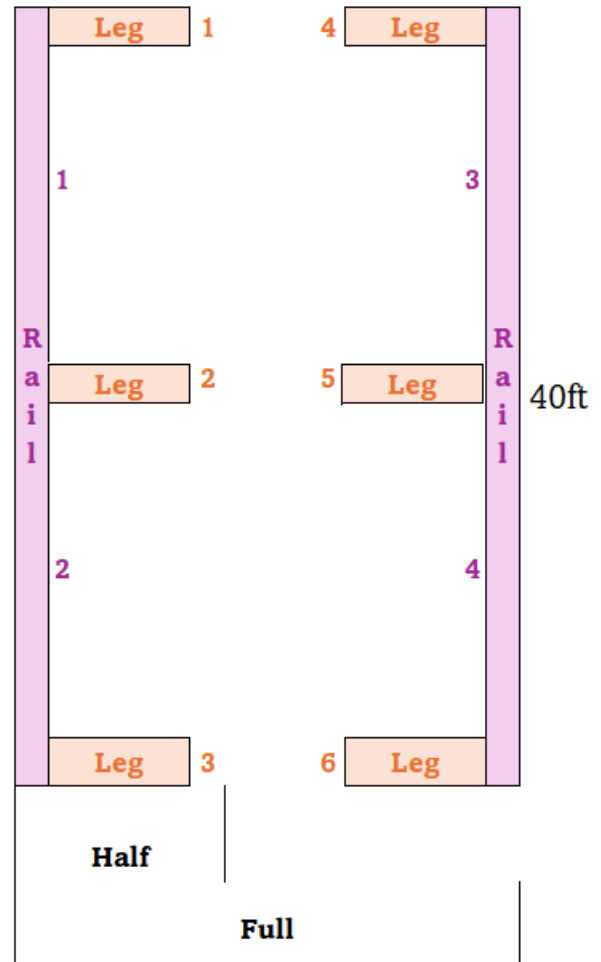
Dome Legs Explained

| DCG Item # | Item | Item Description | Price + GST |
|------------|-----------|--|--------------|
| 79 | Legs (GP) | Legs (GP) 2.6H Dome Standard Legs Made from 200UC galvanised steel | \$450 each |
| 80 | Legs (HC) | Legs (HC) 2.9H Dome Long Legs Made from 200UC galvanised steel | \$500 each |
| 36 | Rails | Rails (suit GP or HC) 6m long Dome Standard Rails Made from 200UC galvanised steel | \$1,040 each |



| 20ft GP | DCG # | Item | Metres | Half Side | Both Sides |
|---------|-------|---------|--------|-------------------|--------------------|
| | 79 | Legs GP | 2.6 | 2 \$ 900.00 | 4 \$ 1,800.00 |
| | 36 | Rails | 6.0 | 1 \$ 1,040.00 | 2 \$ 2,080.00 |
| | | | | \$1,940.00 | \$ 3,880.00 |

| 20ft HC | DCG # | Item | Metres | Half Side | Both Sides |
|---------|-------|---------|--------|-------------------|--------------------|
| | 80 | Legs HC | 2.9 | 2 \$ 1,000.00 | 4 \$ 2,000.00 |
| | 36 | Rails | 6.0 | 1 \$ 1,040.00 | 2 \$ 2,080.00 |
| | | | | \$2,040.00 | \$ 4,080.00 |



| 40ft GP | DCG # | Item | Metres | Half Side | Both Sides |
|---------|-------|---------|--------|-------------------|--------------------|
| | 79 | Legs GP | 2.6 | 3 \$ 1,350.00 | 6 \$ 2,700.00 |
| | 36 | Rails | 6.0 | 2 \$ 2,080.00 | 4 \$ 4,160.00 |
| | | | | \$3,430.00 | \$ 6,860.00 |

| 40ft HC | DCG # | Item | Metres | Half Side | Both Sides |
|---------|-------|---------|--------|-------------------|--------------------|
| | 80 | Legs HC | 2.9 | 3 \$ 1,500.00 | 6 \$ 3,000.00 |
| | 36 | Rails | 6.0 | 2 \$ 2,080.00 | 4 \$ 4,160.00 |
| | | | | \$3,580.00 | \$ 7,160.00 |



Dome Legs Explained

Example of Half Side Only Needed



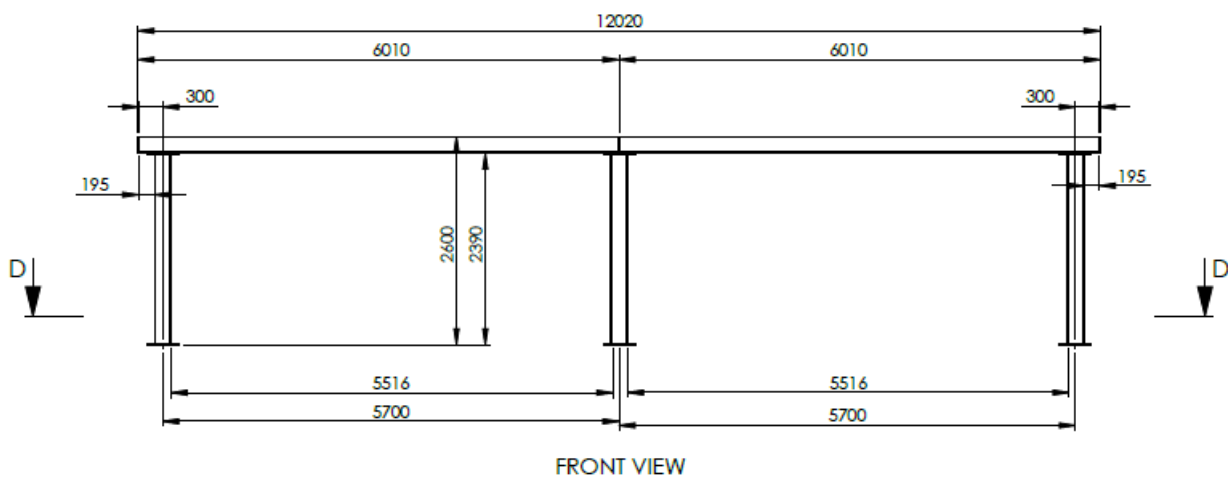
Dome Legs Explained

Example of Both Sides Needed



Dome Legs Explained

Pre-dome shelter installation - Leg Post Spacing



Legs and rails are made out of 200 UC.

Base plates are 200 square and how far away the base plates need to be is indicated in a diagram within the installation manual specific to the size dome purchased.

